

Hydraulic Power Unit, Fixed Or
Variable Displacement Pump,
Ready For Delivery In Days

F.A.S.T. Power Unit Program

Flexible Design
Available Components
System Integration
Tested Technology



Contents	Page
Code Builder	2
Power Table	3
Configurations	4
Dimensional Data	5
Technical Data	6-7

Specifications	
- Output Capacity	2-21 GPM
- Pressure	3000 PSI
- Circuit Type	Open Loop
- JIC Reservoir Capacity	40 Gallon
- Motor Horsepower	3-20 HP
- Motor Voltage	208/230/460 VAC 3PH
- Factory Paint	Gunmetal Gray

F.A.S.T. POWER UNIT

SERIES

MOTOR

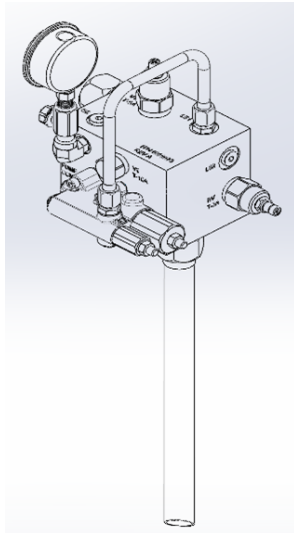
PUMP

HV40

7.5

V18

SERIES	CODE	DESCRIPTION
	HV40	40 GALLON CUSTOM RESERVOIR



MOTOR	CODE	PART NUMBER	HORSEPOWER
	3	3-1800-182TC	3 HP
	5	5-1800-184TC	5 HP
	7.5	7.5-1800-213TC	7.5 HP
	10	10-1800-215TC	10 HP
	15	15-1800-254TC	15 HP
	20	20-1800-256TC	20 HP



Marine-Duty Motors

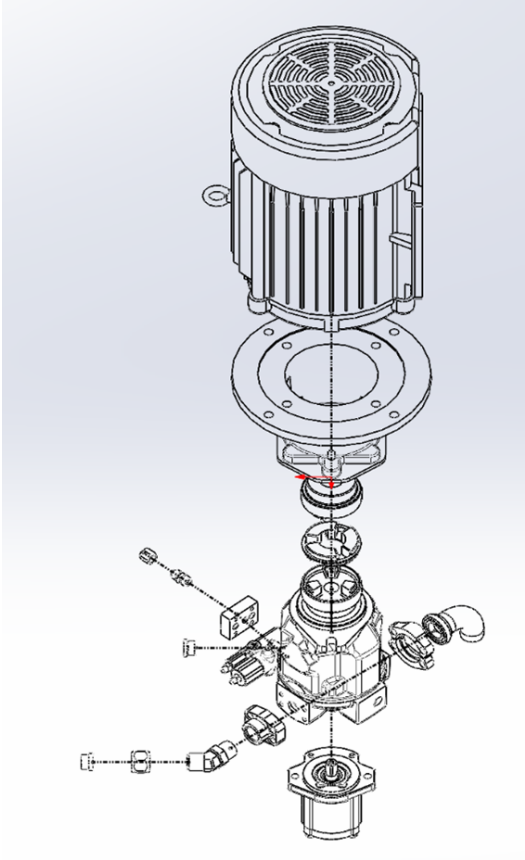
PUMP	CODE	PART NUMBER	DESCRIPTION	FLOW RATE
	V18	R902502736	A A10VSO 18 DFR /31R-VKC62N00	8.4 GPM
	V28	R902502732	A AA10VSO 28 DFR /31R-VKC62N00	13.0 GPM
	V45	R902502733	A AA10VSO 45 DFR /31R-VKC62N00	20.9 GPM
	F04	9510290021	AZPF-12-004RQR12MB	1.9 GPM
	F05	9510290022	AZPF-12-005RQR12MB	2.3 GPM
	F08	9510290023	AZPF-12-008RQR12MB	3.7 GPM
	F11	9510290024	AZPF-12-011-RQR12MB	5.1 GPM
	F14	9510290025	AZPF-12-014-RQR12MB	6.5 GPM
	F16	9510290122	AZPF-12-016RQR12MB	7.4 GPM
	F19	9510290123	AZPF-12-019RQR12MB	8.8 GPM
	F22	9510290124	AZPF-12-022RQR12MB	10.2 GPM

PUMP CONTROL

DR

PUMP CONTROL	CODE	DESCRIPTION
	F	FIXED
	FU	FIXED WITH UNLOADING VALVE
	DR	PRESSURE CONTROL
	DRG	REMOTE PRESSURE CONTROL
	DFR	PRESSURE FLOW CONTROL
	ED	ELECTRO-HYDRAULIC PRESSURE CONTROL
	CM**	CUSTOM VALVE ASSEMBLY

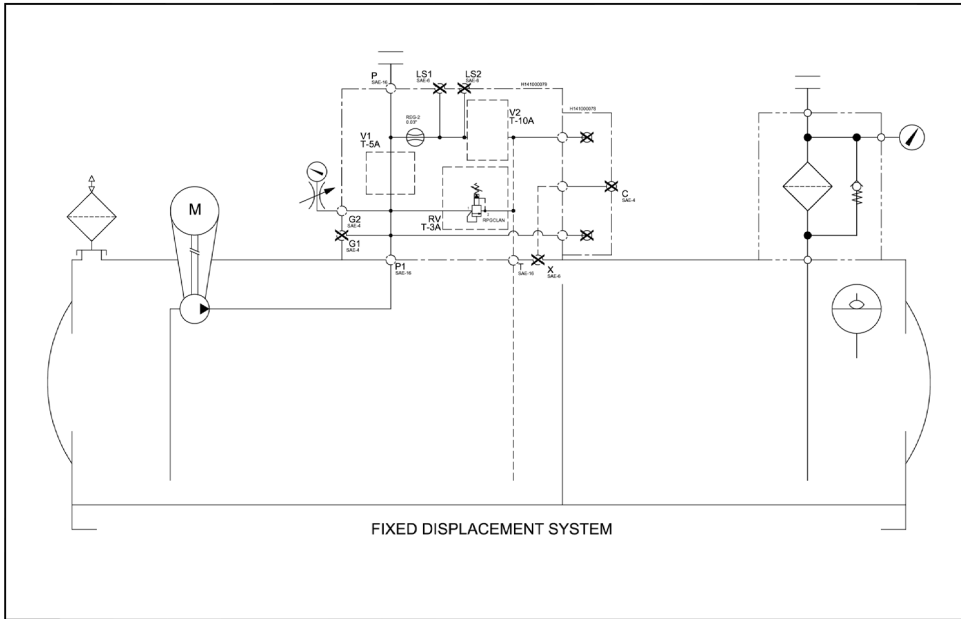
F, FU & CM** Compatible with Fixed Displacement Pumps
 DR, DRG, DFR, ED & CM** Compatible with Variable Displacement Pumps



		Pump Displacement										Max Continuous Pressure PSI
		V18	V28	V45	F04	F05	F08	F11	F14	F16	F19	
Motor Horse Power	3	522	336	N/A	2350	1880	1175	855	671	588	495	427
	5	870	560	348	3625*	3133*	1958	1424	1119	979	825	712
	7.5	1306	839	522	3625*	3625*	2938	2136	1679	1469	1237	1068
	10	1741	1119	696	3625*	3625*	3625*	2849	2238	1958	1649	1424
	15	2611	1679	1044	3625*	3625*	3625*	3625*	3357*	2938	2474	2136
	20	3482*	2238	1393	3625*	3625*	3625*	3625*	3625*	3625*	3045*	2849

* Note: DUCTILE MANIFOLD REQUIRED FOR SYSTEM PRESSURE >3000 PSI

CONFIGURATIONS



Fixed Displacement Pump

- System Pressure Control Relief Valve
- System Pressure Control Relief Valve and Unloader Valve
- All Pressure Adjustments Accessible Externally

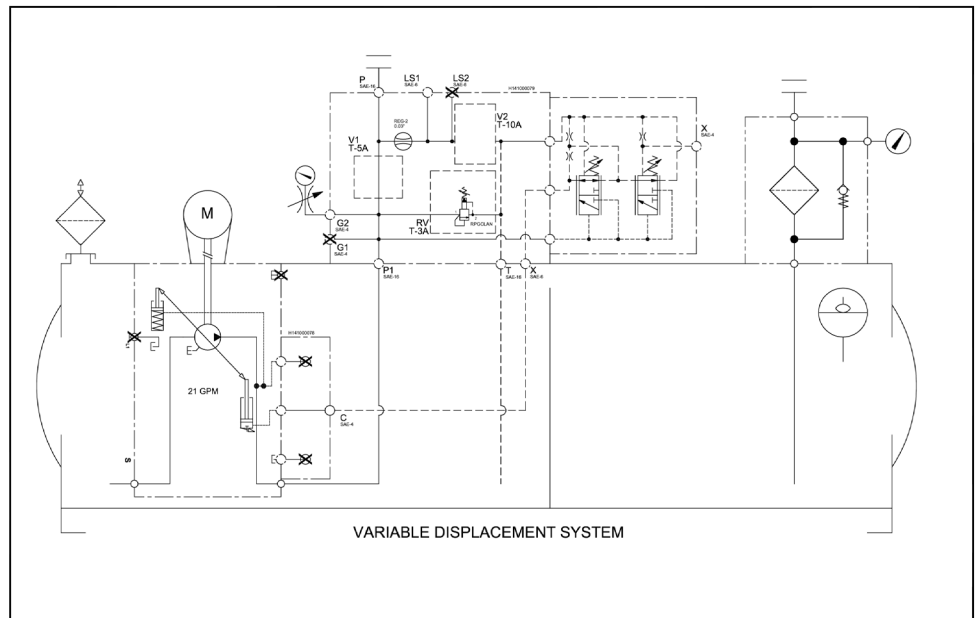
Rexroth AZP* - External Gear Pump 



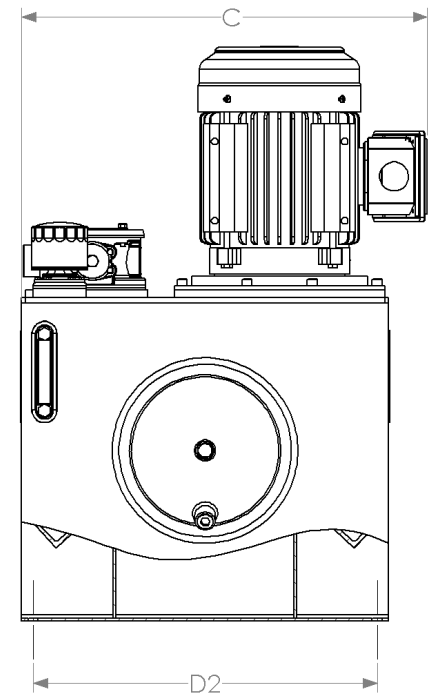
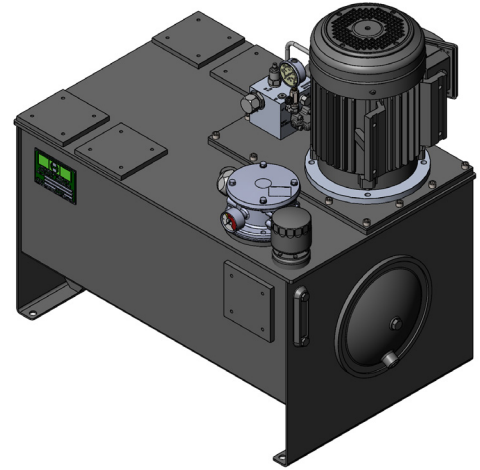
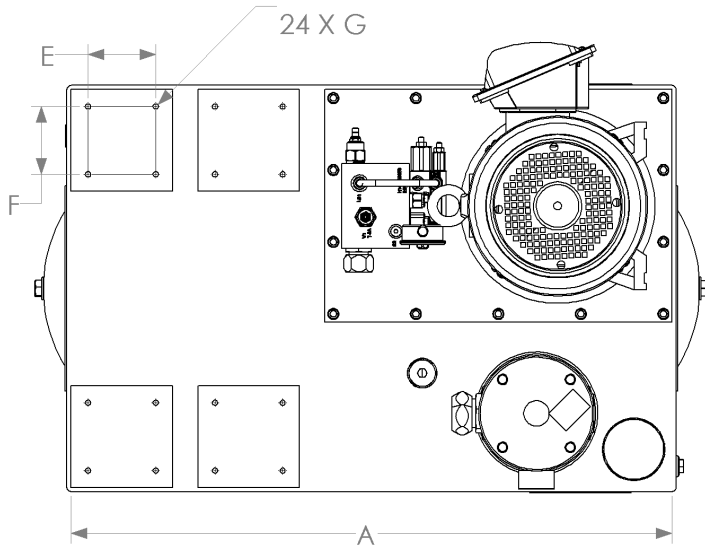
Rexroth A10VSO (Series 31) - Variable Displacement Pump

Variable Displacement Pump

- Pressure Controller
- Pressure and Flow Controls
- Remote Controlled Pressure Control
- Electro-Hydraulic Pressure Control
- All Pressure Adjustments Accessible Externally

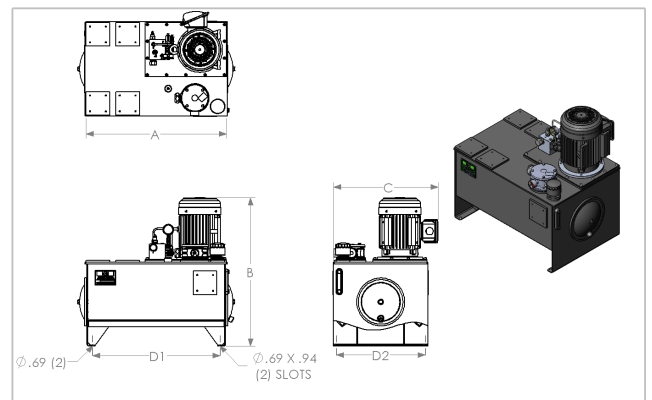
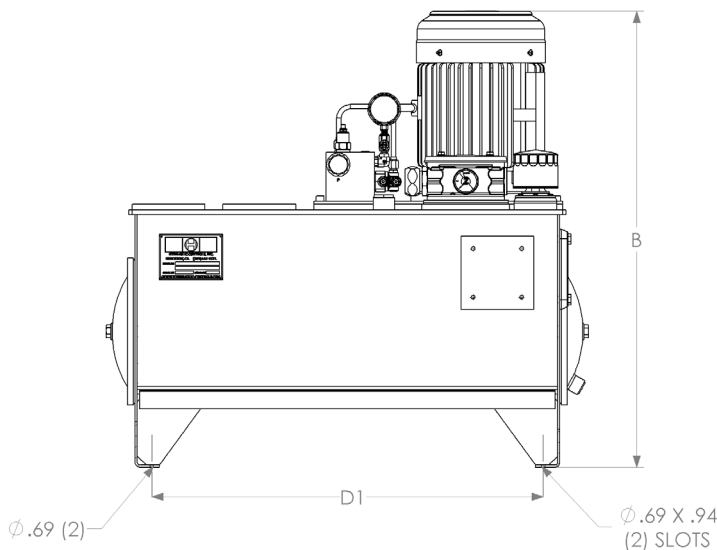


DIMENSIONAL DATA



STANDARD UNIT DIMENSIONS (Inches)								
MODEL	A	B	C	D1 ± .12	D2 ± .12	E	F	G
3V or F**	35.50	38.50	24.50	32.25	22.50	4.00	4.00	3/8"-16UNC
5V or F**	35.50	38.50	24.50	32.25	22.50	4.00	4.00	3/8"-16UNC
7.5V or F**	35.50	43.00	26.75	32.25	22.50	4.00	4.00	3/8"-16UNC
10V or F**	35.50	43.00	26.75	32.25	22.50	4.00	4.00	3/8"-16UNC
15V or F**	35.50	48.00	27.50	32.25	22.50	4.00	4.00	3/8"-16UNC
20V or F**	35.50	48.00	27.50	32.25	22.50	4.00	4.00	3/8"-16UNC

Six Universal Mounting Pads



TECHNICAL DATA

Electric Motors: Class 1 Div 2 Groups A,B,C,D in accordance with NEC

PUMP/MOTOR ASSY CODE	MOTOR CODE	PUMP CODE	HORSE POWER	CALCULATED GPM @ 1800 RPM	MAX CONTINUOUS PRESSURE PSI
3V18	3	V18	3	8.4	522
3V28	3	V28	3	13.0	336
3F04	3	F04	3	1.9	2350
3F05	3	F05	3	2.3	1880
3F08	3	F08	3	3.7	1175
3F11	3	F11	3	5.1	855
3F14	3	F14	3	6.5	671
3F16	3	F16	3	7.4	588
3F19	3	F19	3	8.8	495
3F22	3	F22	3	10.2	427

PUMP/MOTOR ASSY CODE	MOTOR CODE	PUMP CODE	HORSE POWER	CALCULATED GPM @ 1800 RPM	MAX CONTINUOUS PRESSURE PSI
5V18	5	V18	5	8.4	870
5V28	5	V28	5	13.0	560
5V45	5	V45	5	20.9	348
5F04	5	F04	5	1.9	3625*
5F05	5	F05	5	2.3	3133*
5F08	5	F08	5	3.7	1958
5F11	5	F11	5	5.1	1424
5F14	5	F14	5	6.5	1119
5F16	5	F16	5	7.4	979
5F19	5	F19	5	8.8	825
5F22	5	F22	5	10.2	712

PUMP/MOTOR ASSY CODE	MOTOR CODE	PUMP CODE	HORSE POWER	CALCULATED GPM @ 1800 RPM	MAX CONTINUOUS PRESSURE PSI
7.5V18	7.5	V18	7.5	8.4	1306
7.5V28	7.5	V28	7.5	13.0	839
7.5V45	7.5	V45	7.5	20.9	522
7.5F04	7.5	F04	7.5	1.9	3625*
7.5F05	7.5	F05	7.5	2.3	3625*
7.5F08	7.5	F08	7.5	3.7	2938
7.5F11	7.5	F11	7.5	5.1	2136
7.5F14	7.5	F14	7.5	6.5	1679
7.5F16	7.5	F16	7.5	7.4	1469
7.5F19	7.5	F19	7.5	8.8	1237
7.5F22	7.5	F22	7.5	10.2	1068

* Note: DUCTILE MANIFOLD REQUIRED FOR SYSTEM PRESSURE >3000 PSI

PUMP/MOTOR ASSY CODE	MOTOR CODE	PUMP CODE	HORSE POWER	CALCULATED GPM @ 1800 RPM	MAX CONTINUOUS PRESSURE PSI
10V18	10	V18	10	8.4	1741
10V28	10	V28	10	13.0	1119
10V45	10	V45	10	20.9	696
10F04	10	F04	10	1.9	3625*
10F05	10	F05	10	2.3	3625*
10F08	10	F08	10	3.7	3625*
10F11	10	F11	10	5.1	2849
10F14	10	F14	10	6.5	2238
10F16	10	F16	10	7.4	1958
10F19	10	F19	10	8.8	1649
10F22	10	F22	10	10.2	1424

PUMP/MOTOR ASSY CODE	MOTOR CODE	PUMP CODE	HORSE POWER	CALCULATED GPM @ 1800 RPM	MAX CONTINUOUS PRESSURE PSI
15V18	15	V18	15	8.4	2611
15V28	15	V28	15	13.0	1679
15V45	15	V45	15	20.9	1044
15F04	15	F04	15	1.9	3625*
15F05	15	F05	15	2.3	3625*
15F08	15	F08	15	3.7	3625*
15F11	15	F11	15	5.1	3625*
15F14	15	F14	15	6.5	3357*
15F16	15	F16	15	7.4	2938
15F19	15	F19	15	8.8	2474
15F22	15	F22	15	10.2	2136

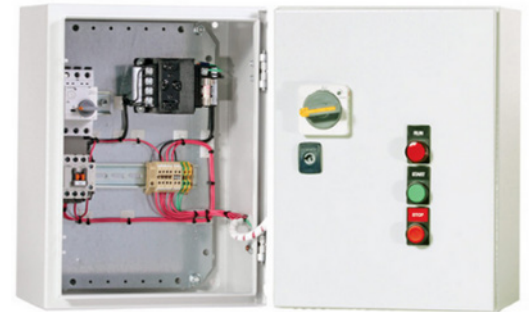
PUMP/MOTOR ASSY CODE	MOTOR CODE	PUMP CODE	HORSE POWER	CALCULATED GPM @ 1800 RPM	MAX CONTINUOUS PRESSURE PSI
20V18	20	V18	20	8.4	3482*
20V28	20	V28	20	13.0	2238
20V45	20	V45	20	20.9	1393
20F04	20	F04	20	1.9	3625*
20F05	20	F05	20	2.3	3625*
20F08	20	F08	20	3.7	3625*
20F11	20	F11	20	5.1	3625*
20F14	20	F14	20	6.5	3625*
20F16	20	F16	20	7.4	3625*
20F19	20	F19	20	8.8	3045*
20F22	20	F22	20	10.2	2849

* Note: DUCTILE MANIFOLD REQUIRED FOR SYSTEM PRESSURE >3000 PSI

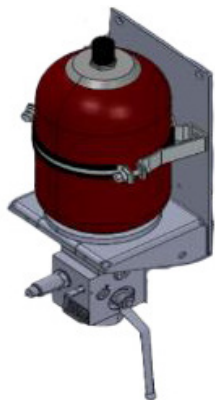
Options

Options Available Upon Request

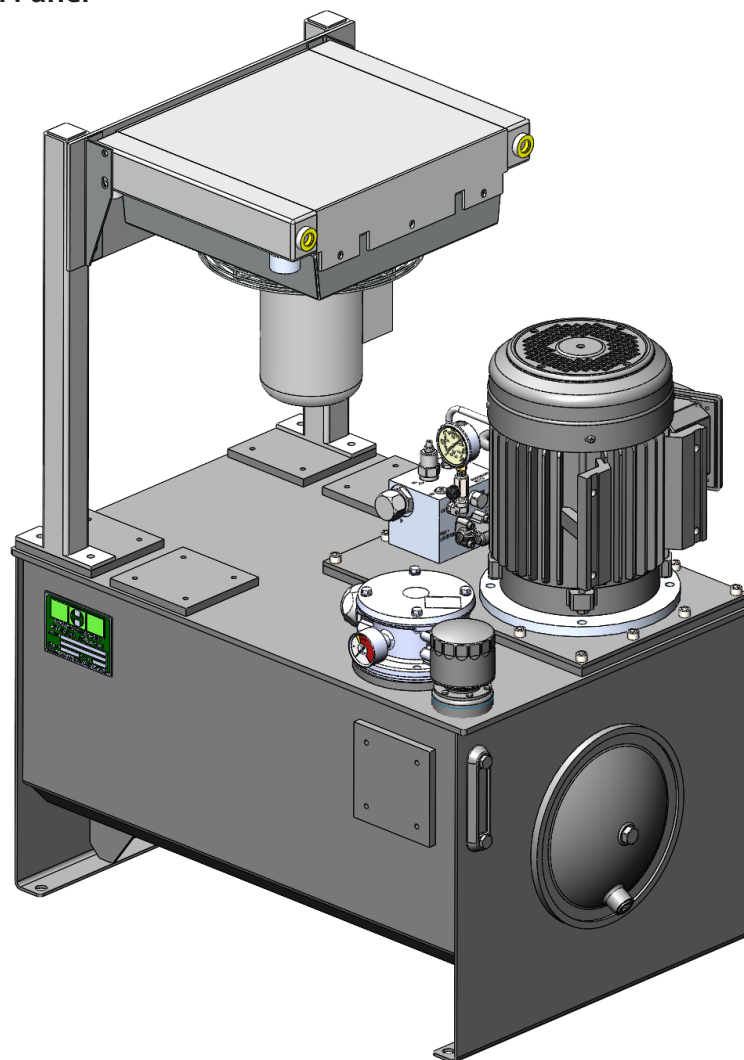
- Accumulator
- Temperature Switch
- Level Switch
- Heat Exchanger
- Pressure Filter
- Filter Dirt Alarm
- Drip Pan
- Electrical Control Panel



Electrical Control Panel



Accumulator



ISO 9001:2015